

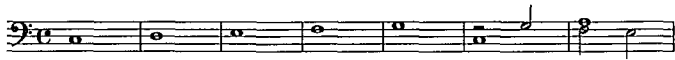
## Contents/ Inhalt

Preface/ Vorwort .....	v
The Transmission of Pachelbel's Fugues/Die Überlieferung der Fugen Pachelbels .....	vi

### Fugues/Fugens

#### 1.-11. Fugues from the/Fugens aus dem **Sandberger Ms**

1. Fuga (Ricercar) in C supra Ut re mi fa sol .....	2
---	---



2. Fuga in F.....	6
-------------------	---



3. Fuga in D.....	9
-------------------	---



4. Fuga in d (Allabreve).....	12
-------------------------------	----



5. Fuga in a.....	15
-------------------	----



6. Fuga in d.....	17
-------------------	----



6a. Variant: Fuga in f.....	92
-----------------------------	----



7. Fuga in C.....	19
-------------------	----



#### 12.-22. Fugues from the/ Fugens aus dem **London Ms**

12. Fuga à 2 in C.....	37
------------------------	----



13. Fuga à 2 in C.....	38
------------------------	----



14. Fuga à 3 in C.....	39
------------------------	----



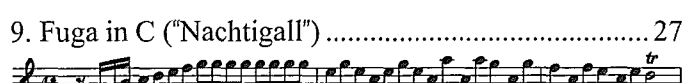
8. Fuga in d.....	22
-------------------	----



9. Fuga in C ("Nachtigall").....	27
----------------------------------	----



10. Fuga in D.....	31
--------------------	----



10a. Fuga in D (Variant from Commer).....	93
---	----



11. Fuga in g.....	34
--------------------	----



15. Fuga in C.....	42
--------------------	----



16. Fuga in C.....	44
--------------------	----



17. Fuga in c.....	47
--------------------	----



18. Fuga in g (Mixolydian)..... 49



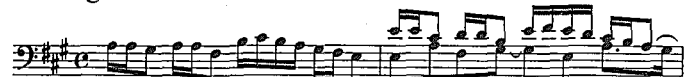
19. Fuga in G ..... 50



20. Fuga in g ..... 56



21. Fuga in A ..... 58



22. Fuga in a ..... 60



23.-32. Fugues from Various Sources/ Fugen aus verschiedenen Quellen

23. Fuga in C ..... 64



24. Fuga in C ..... 66



24a. Praeludium from Ms Berlin 38111 ..... 95



25. Ricercar in c ..... 70



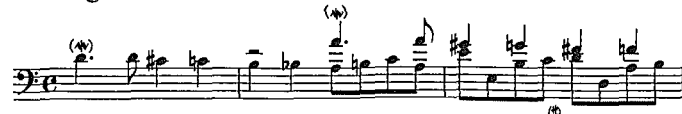
25a. Variant from the Eberlin Ms..... 96



26. Fuga in d ..... 74



27. Fuga in d ..... 76



28. Fuga in e ..... 78



29. Ricercar in f-sharp/ fis-Moll ..... 81



30. Fuga à 3 in G..... 84



31. Fuga in B-flat/ B-Dur..... 86



31a. Variant from P 247..... 98



32. Fuga in b/ h-Moll ..... 89



Continued on next page/ Fortsetzung nächste Seite

## Appendix/ Anhang

Fuga in a (Fragment) ..... 100



Dubious Pieces/ Stücke zweifelhafter Echtheit

1. Fuga in C ..... 100



2. Præludium et Fuga in c ..... 101



3. Præludium et Fuga in d ..... 103



Editorial Methods Used/ Zur Editionstechnik ..... 105

Critical Commentary ..... 106

## Illustrations/ Abbildungen

- Facsimile: **Tab Leipzig** Leipziger Städtische Bibliotheken, Sammlung Becker II.2.51 ..... 36
- Facsimile: **London Ms** London, British Library, Add. MS 31221, fol. 64a (63<sup>V</sup>) ..... 63
- Facsimile: **Benisch Ms** Yale University Music Library LM5056, p. 66 ..... 75

For the front cover, a map of Erfurt from HARTMANN SCHEDEL's *Liber Chronicarum* (Nuremberg Chronicle, 1493) has been used.  
 Umschlaggestaltung unter Verwendung der Stadtansicht von Erfurt aus HARTMANN SCHEDELS Weltchronik (1493).

©Copyright 2005 by **Wayne Leupold Editions, Inc.** for all countries  
 8510 Triad Drive, Colfax, North Carolina 27235 USA.

International Copyright Secured. All Rights Reserved Including Recording and Public Performance for Profit. Made in the USA.  
 Copying or reproducing this publication in whole or in part by any means violates the Federal Copyright Law.